

THE FRANKENMAN

RANGE OF CIRCULAR STAPLERS



 **FRANKENMAN**

SIMPLY, THE MOST EXTENSIVE PORTFOLIO OF CIRCULAR STAPLERS ON THE MARKET
RELIABLE PERFORMANCE WITH UNIQUE INNOVATIONS



WHEN YOU PUT PATIENTS' HEALTH FIRST,
REMARKABLE THINGS HAPPEN



are very proud of our Circular stapler portfolio. Simply the most extensive of any manufacturer on the market.

Many devices have been designed with the input of Global Key opinion leaders to bring unique iterations and innovative devices to the surgical community whilst providing improved functionality, ergonomics and the continual evolution of our circular stapler portfolio, embodies our ethos of "When you put patients' health first, remarkable things happen"

STANDARD FEATURES OF THE FRANKENMAN CIRCULAR STAPLER PORTFOLIO

- Available in 21, 25, 28 & 32mm.
- Matt black coating reduces unwanted light reflection during surgery.
- Maintains the largest lumen relative to external diameter, thereby reducing the risk of stricture.
- "Wing Nut" adjusting knob allows for easier opening & closing when wearing gloves.
- Smooth, lip free anvil design improves ease of introduction & removal.
- Air sealed to reduce loss of insufflation during laparoscopic procedures.
- All devices have a unique serial number for improved tracking & traceability.



SAFETY & EFFICACY

- Longer, 5.0mm, open staple leg height, to ensure correct "B" Shaped formation & security, even in thicker tissue.
- Unique engineering of integrated staple driver & cutting blade, gives greater stability & strength leading to improved performance during the firing cycle.
- Robust Safety locking mechanism prevents premature firing.
- Clear indicators for opening & closing.
- Extended pursestring tying area, reduces risk of inaccurate application.
- Reduced "force to fire" vs alternative devices, due to design of washer in anvil, reduces distal movement, & increases stability during the firing cycle. This may also reduce the risk of incomplete firing.



ANVIL HOLDER

- All Frankenman Circular Staplers are supplied with an anvil holding rod as standard.
- Allows secure handling of the anvil when applying a pursestring suture.
- Controlled handover and docking of the anvil during TransAnal procedures.



VARIABLE TISSUE COMPRESSION

- Ensures appropriate staple formation for a variety of tissue thicknesses.
- "White", "Blue" & "Green" staple closure heights in one device.
- Gives the surgeon greater control.



VARIATIONS

CS STANDARD


-  420mm Standard length.

-  21, 25, 28 & 32mm.



CS - "ENDOSTEER" – XL

-  520mm - Extended length


-  For use in Laparoscopic procedures, or where a longer device is required to complete an anastomosis.

-  21, 25, 28 & 32mm



CS – COMPACT

-  345mm - Short, straight, compact

-  Improved ergonomics, & reduced, inadvertent, distal tip movement during firing cycle may improve/reduce.

-  Precision & accessibility.

-  25, 28 & 32mm



CS - COMPACT EA


-  As above.


-  Extended length anvil shaft 66.2mm vs 38.2mm

-  25, 28 & 32mm



CS – FLIP


-  The unique "flip" Circular Stapler curves downwards rather than upwards.


-  Improves ergonomics during procedures such as gastrojejunal reconstruction (Billroth I/II), whilst also maintaining visibility of the "Variable Tissue Compression" gauge.

-  28mm

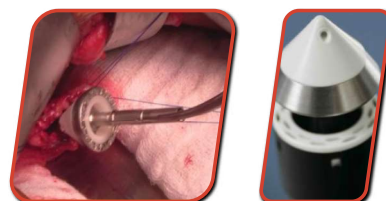


CS - CONE TIP

-  The unique option of a "cone tip" anvil is designed for atraumatic placement during procedures such as Oesophagogastrectomy.

-  Holes in the tip of the anvil allow for traction & manipulation with sutures.

-  25 & 28mm



ORDERING CODES AND SPECIFICATIONS

PRODUCT CODE	DESCRIPTION		TOTAL WORKING LENGTH	OUTER DIAMETER (mm)	LUMEN SIZE (mm)	STAPLE QUANTITY	OPEN STAPLE HEIGHT	CLOSED STAPLE HEIGHT	STAPLE CROWN	PER BOX
CS21L	LONG ENDOSTEER™	●	520MM	21	13	16	4.5MM	1.0 - 2.0MM	4MM	3
CS25L	LONG ENDOSTEER™	○		25	17	20	5.0MM			
CS28L	LONG ENDOSTEER™	●		28	20	24				
CS32L	LONG ENDOSTEER™	●		32	24	28				
CS21	STANDARD	●	420MM	21	13	16	4.5MM			
CS25	STANDARD	○		25	17	20	5.0MM			
CS28	STANDARD	●		28	20	24				
CS32	STANDARD	●		32	24	28				
CS25CT	COMPACT-SHORT	○	345MM	25	17	20				
CS28CT	COMPACT-SHORT	●		28	20	24				
CS32CT	COMPACT-SHORT	●		32	24	28				
CS25CT/EA	COMPACT-SHORT-EXTENDED ANVIL	○		25	17	20				
CS28CT/EA	COMPACT-SHORT-EXTENDED ANVIL	●		28	20	24				
CS32CT/EA	COMPACT-SHORT-EXTENDED ANVIL	●	32	24	28					
CS25C	CONE TIP	○	420MM	25	17	20				
CS28C	CONE TIP	●		28	20	24				
CS28F	FLIP	●		28	20	24				

ALSO AVAILABLE FROM FRANKENMAN

STANDARD CIRCULAR STAPLERS



COMPACT CIRCULAR STAPLERS



LINEAR STAPLERS



LINEAR CUTTING STAPLERS



TRANSCUT™ - TRANSVERSE LINEAR CUTTING STAPLERS



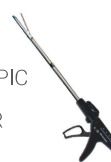
CIRCULAR STAPLERS FOR RECTAL PROLAPSE & ANOPEXY



UNIVERSAL TRANSANAL ACCESS PLATFORM



ENDOSCOPIC LINEAR CUTTER



ACCESSORIES



Frankenman are proud to offer several training courses via the Frankenman Academy, in numerous surgical disciplines, with world renowned expert faculty.

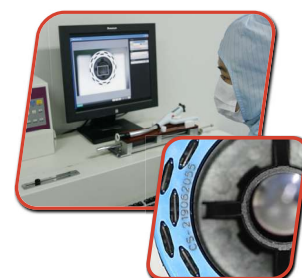
These courses are staged to cover both didactic elements and "hands on" skills workshops.

QUALITY CONTROL

We pride ourselves on world leading continual quality improvement processes.

ALL stapling devices and reloads have a unique serial number, as well a batch/lot number, to allow for more accurate tracking and traceability.

In addition we test fire 100% of our products (before they are then reloaded and packaged), to verify correct B-Shaped closure.



www.frankenman.com | info@frankenman.co.uk | +86-512-68786150

Frankenman International Ltd - 108 Jinfeng South Road, High New District, - Suzhou, 215163, P.R. China